

Site 2

- 1st gen. Fold Axial Plane (Poles)
- ▲ Fold Axis
- ▲ Main Mylonitic Foliation (S0) [N.E.A.D. + Fisher] mean pole
- ▲ Main Mylonitic Foliation (S0) [N.E.A.D. + Fisher] mean plane
- 1st gen. Fold Axial Plane [M.E.A.D. + Fisher] mean pole
- 1st gen. Fold Axial Plane [M.E.A.D. + Fisher] mean plane
- ◆ Fold Axis [K-means] mean vector
- 1st gen. Fold Axial Plane mean confidence cone
- Main Mylonitic Foliation (S0) mean confidence cone

Contour applied on:  
Main Mylonitic Foliation (S0)  
Method: Kamb (exponential smoothing)  
Std. Dev.: 2.0

1st gen. Fold Axial Plane = 25  
Fold Axis = 15  
Main Mylonitic Foliation (S0) = 174

**Legend**  
**UAV derived structural features**

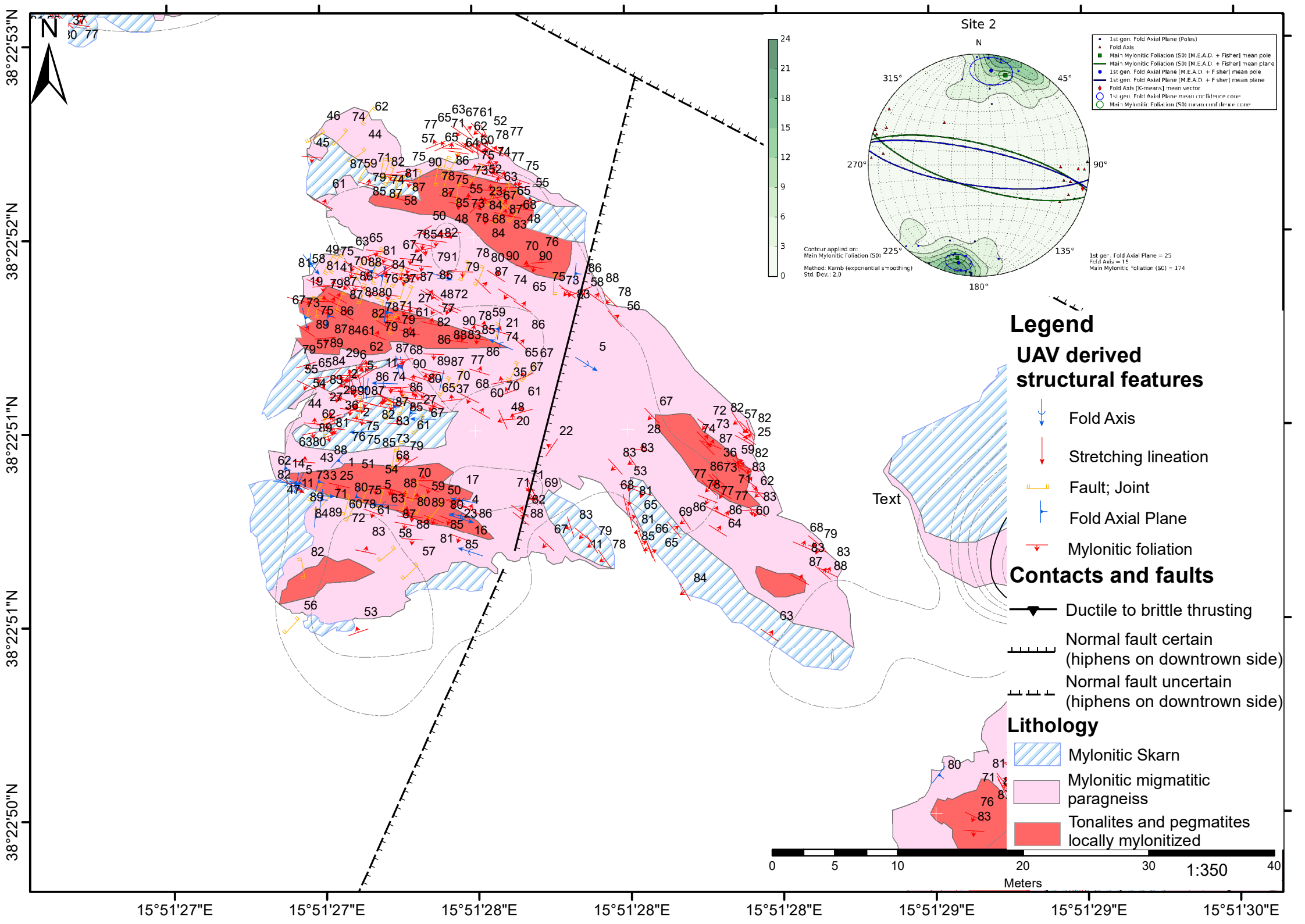
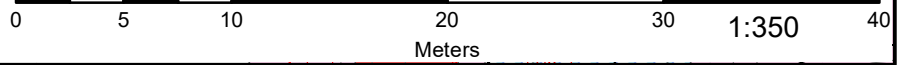
- Fold Axis
- Stretching lineation
- Fault; Joint
- Fold Axial Plane
- Mylonitic foliation

**Contacts and faults**

- Ductile to brittle thrusting
- Normal fault certain (hiphens on downthrown side)
- Normal fault uncertain (hiphens on downthrown side)

**Lithology**

- Mylonitic Skarn
- Mylonitic migmatitic paragneiss
- Tonalites and pegmatites locally mylonitized



15°51'27"E 15°51'27"E 15°51'28"E 15°51'28"E 15°51'28"E 15°51'29"E 15°51'29"E 15°51'30"E

